

As reliable classic machines, the HM 3xx/HM 400 series unites all the outstanding properties of a production crimper. They are compact, powerful and make ergonomic working possible. Combining a convincingly solid construction with a high level of user friendliness, and long service life, the HM 3xx/HM 400 set a new standard for quality and cost effectiveness.



HM 325 | HM 375 | HM 380



HM 400

### Engineered solutions using quality components

- Smaller machine increases ergonomics
- HiLo cylinder - Maximum efficiency causing less heat
- Noiseless high-quality pump
- Full length of fittings crimped in one stroke increases product quality and production efficiency
- Lateral reinforcement optimizes overall tolerance

### Fixed 6- o'clock die

- Workpiece does not move, making it easier to position laterally
- Increases productivity, driving up profitability
- Reduces risk for injuries

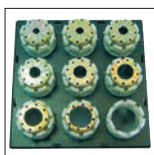
### Slide bearing technology

- No greasing improves cleanliness of machine and prolongs its lifetime
- Maximum productivity with very low maintenance costs
- Flaking cannot stick in grease, no risk of prematurely damaging the crimping head
- End product can be used in sanitary applications without cleaning
- 20% more capability for crimping stronger or more difficult couplings versus our competition's equivalent crimpers
- Consistently accurate crimp result

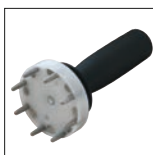
### CE compliant

We reserve the right to make technical changes without notice. Options are machine parts that can only be ordered while buying the machine.

## Package



GDS 239 B



GDC 239.5

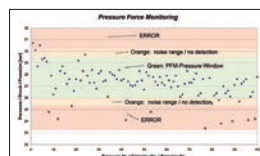
- Package = Machine
- + PB Ø 17, 20, 24, 28, 32, 40, 44, 50, 57, 71
- + 237.239.2L2
- + GDC 239.5
- + GDS 239 B
- + Control C.2



TA (A)

## Pressure Force Monitoring

### PFM – Standard on all machines with Control C.2

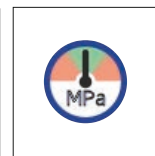


UDL included with Control C.2

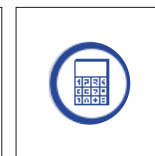
Quality-enhancing option for series production. With PFM, the upper and lower pressure limits can be set by adjusting the tolerance values obtained from test pressing. Pressures outside these limits are output as errors. It is possible to let the machine switch off at a fixed upper or lower limit, thereby obtaining a higher process safety.



Multistep

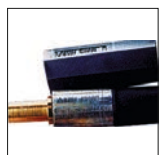


Crimping by Pressure



Industrial calculator

## Accessories



PTS



LUF



HM 325 | HM 375 | HM 380



HM 400

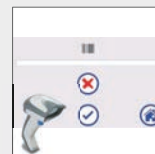
### Additional Information



The compact, narrow and ergonomic construction makes working on both sides possible.



The fixed 6- o'clock die makes safe and low-force positioning of the workpiece possible, which improves cost effectiveness as well as safety.



With the Barcode Scanner you can scan articles quickly and efficiently.

Technical data	HM 325	HM 375	HM 380	HM 400 <span style="color:red">NEW</span>
Crimp force (kN / Ton)	2 800/280	3 150/315	3 400/340	3 750/375
No grease: 20% less friction	✓	✓	✓	✓
Control	Control C.2 + Touch	Control C.2 + Touch	Control C.2 + Touch	Control C.2 + Touch
SAE R 15/4SH 1 piece fitting*	2"	3"	3"	3"
SAE R 15/4SH 2 piece fitting*	2"	2½"	3"	3"
Industrial*	4"	4"	4"	6"
90° Elbows*	3"	3"	3"	3"
Max. Crimp range**	165 mm**	165 mm**	165 mm**	190 mm**
Opening	+ 70 mm	+ 70 mm	+ 70 mm	+ 130 mm
Opening without dies	215 mm	215 mm	215 mm	300 mm
Master dies length (mm)	126 mm	126 mm	126 mm	150 mm
Type of dies	237 L/239-xx	237 L/239-xx	237 L/239-xx	554/239-xx
Speed (mm/sec)				
Close	23	23	23	18
Crimp	1,4	1,4	1,3	1,4
Open	33	33	33	20
Noise level	69 dBA	62 dBA	62 dBA	62 dBA
Drive	4 kW 3~VAC	4 kW 3~VAC	4 kW 3~VAC	5,5 kW 3~VAC
Oil	100 L	100 L	100 L	260 L
L x W x H (mm)	1 200 x 600 x 1 700	1 200 x 600 x 1 700	1 200 x 600 x 1 700	630 x 1500 x 1 800
Weight	750 kg	750 kg	750 kg	1400 kg
CGS (Conicity Guard System)	✓	✓	✓	✓
HiDS (High Pressure Pump Dynamic Suction)	✓	✓	✓	✓

Type of dies	
	<b>239-xx-β-yy</b>
Ø mm	-mm-
6,8	50
9	50
10	50
12	65
14	65
16	65
17	65
19	65
20	65
22	65
24	65
26	65
28	80
30	80
31	80
32	80
34	80
36	80
38	80
39	80
40	80
44	80
47	100
50	100
54	100
57	100
62	100

Type of dies	
	<b>237 L</b>
Ø mm	-mm-
54	118
57	118
62	118
67	118
71	118
74	118
78	118
84	118
86	118
90	118
96	118
96	118
103	118
106	126
111	126
116	126
121	126
126	126
131	126

Type of dies	
	<b>554</b>
Ø mm	-mm-
57	120
62	120
67	120
71	120
74	120
78	120
84	120
86	120
90	120
96	120
103	120
106	150
111	150
116	150
121	150
126	150
131	150
136	150
146	150
156	150

\* According to the fitting.

\*\* With master dies.

## Accessories

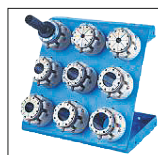
## Control C.2: Accessories



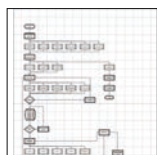
QDS 239 S



QDS 239 C



QDS 239 R



Customized software



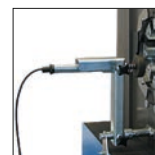
Electronic caliper



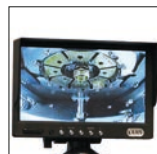
Calibration mandrel



Barcode scanner



TA (A)



QCS



SHS



Oil Cooler OC HM xxx



PS Double foot pedal



RFID



ULS



807.2



DMS