



Due to their narrow, innovative construction, high level of user friendliness, and long service life, the HM 220 and HM 225 set the standard for quality and cost effectiveness. Their unrivaled accessibility makes ergonomic working possible – optionally from both sides – in production and series manufacture. The tried and tested greaseless slide bearing technology reduces maintenance costs, and the strong crimping force of up to 1400 /1600 kN is rated for widths up to 1¼“.



HM 225

Engineered solutions using quality components

- Smaller machine increases ergonomics
- HiLo cylinder - Maximum efficiency causing less heat
- Noiseless high-quality pump

Fixed 6- o'clock die

- Workpiece does not move, making it easier to position laterally
- Increases productivity, driving up profitability
- Reduces risk for injuries

Slide bearing technology

- No greasing improves cleanliness of machine and prolongs its lifetime
- Maximum productivity with very low maintenance costs
- Flaking cannot stick in grease, no risk of prematurely damaging the crimping head
- End product can be used in sanitary applications without cleaning
- 20% more capability for crimping stronger or more difficult couplings versus our competition's equivalent crimpers
- Consistently accurate crimp result

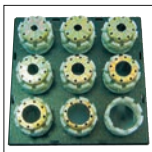
CE compliant

We reserve the right to make technical changes without notice. Options are machine parts that can only be ordered while buying the machine.

Package

Pressure Force Monitoring

Accessories

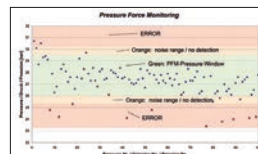


QDS 239 B



QDC 239.5

PFM – Standard on all machines with Control C.2



UDL included with Control C.2

Quality-enhancing option for series production. With PFM, the upper and lower pressure limits can be set by adjusting the tolerance values obtained from test pressing. Pressures outside these limits are output as errors. It is possible to let the machine switch off at a fixed upper or lower limit, thereby obtaining a higher process safety.

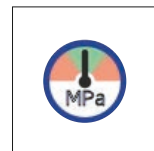


QDS 239 C

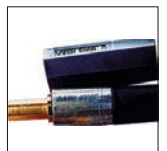
- Package = Machine
- (HM 225) + PB Ø 17, 20, 24, 28, 32, 40, 47, 54, 62
- (HM 220) + PB Ø 17, 20, 24, 28, 32, 40, 44, 50
- + QDS 239 B + QDC 239.5
- +Control C.2



Multistep



Crimping by Pressure



PTS



optional: QDS 239 S

HM 220

HM 225

Additional Information



The clear Control C.2 and the optional UTS software provide complete documentation of production data, including the timestamp.



The compact, narrow and ergonomic construction makes working on both sides possible.



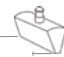
The fixed 6-o'clock die makes safe and low-force positioning of the workpiece possible, which improves cost effectiveness as well as safety.

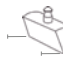
Technical data	HM 220	HM 225
Crimp force (kN / Ton)	1 350/135	1 600/160
No grease: 20% less friction	✓	✓
Control	Control C.2 + Touch	Control C.2 + Touch
SAE R 15/4SH* 1 piece fitting*	1¼"	1¼"
4 SH* 2 piece fitting*	1"	1¼"
SAE R 15* 2 piece fitting*	1"	1¼"
Industrial*	2"	2"
90° Elbows*	1½"	1½"
Max. Crimp range	70 mm	70 mm
Opening	+ 35 mm	+ 40 mm
Opening without dies	105 mm	110 mm
Master dies length (mm)	75 mm	90 mm
Type of dies	239	239 -xx-θ-yy
Speed (mm/sec) **		
Close	10/20	19/30
Crimp	5/10	1,5/3
Open	10/20	19/30
Noise level	53 dBA	53 dBA
Drive	5,5 kW 3~VAC	4 kW 3~VAC
Oil	80 L	80 L
L x W x H (mm)	645 x 560 x 1450	645 x 560 x 1470
Weight	310 kg	470 kg

* According to the fitting.

** Standard: Half power twice faster included.

*** Outside master dies length, consult Uniflex

Type of dies	
	239-xx-θ-yy
Ø mm	-mm-
6,8	50
9	50
10	50
12	50
14	50
16	65
17	65
19	65
20	65
22	65
24	65
26	65
28	80
30	80
31	80
32	80
34	80
36	80
38	80
39	80
40	80
44	80
47	100
50***	100
54***	100
57***	100
62***	100

Type of dies	
	239
Ø mm	-mm-
6,8	50
9	50
10	50
12	50
14	60
16	60
17	60
19	60
20	60
22	60
24	60
26	75
28	75
30	75
31	75
32	75
34	75
36	75
38	75
39	75
40	75
44	75
47	75
50	75
54	75
57	75
62	75

Accessories

Control C.2: Accessories



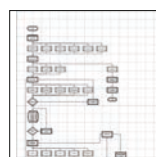
QDS 239 S



QDS 239 R



SHS



Customized software



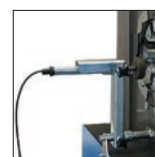
Electronic caliper



Calibration mandrel



Barcode scanner



TA (A)



LUF

Oil Cooler
OC HM xxx

PS Double foot pedal



RFID



ULS



807.2



DMS