



As the unrivaled classic in the 1¼"-field, with its narrow, innovative construction, high level of user friendliness, versatility and long service life, the S 4 sets the unbeatable standard for quality and cost effectiveness. Its compact construction allows for ergonomic working. The use of solid master dies allows you to crimp all types of fittings with the tried and tested greaseless slide bearing technology, which reduces maintenance costs and increases the product quality.



S 4 C.2



S 4 Ecoline



S 4 DC Mobileline

Large opening

Openly built for easy crimping of even 90° elbow pieces, without having to remove all the dies

Compact Design

Fits in any workshop

Slide bearing technology

- No greasing improves cleanliness of machine and prolongs its lifetime
- Maximum productivity with very low maintenance costs
- Flaking cannot stick in grease, no risk of prematurely damaging the crimping head
- End product can be used in sanitary applications without cleaning
- 20% more capability for crimping stronger or more difficult couplings versus our competition's equivalent crimpers
- Consistently accurate crimp result

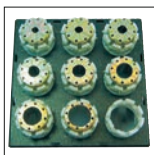
ECOLINE Version

High quality for those new to crimping

CE compliant

We reserve the right to make technical changes without notice. Options are machine parts that can only be ordered while buying the machine.

Package



QDS 239 B



QDC 239.5

- Package = Machine
- + PB Ø 17, 20, 24, 28, 32, 40, 47, 54, 62
- + QDS 239 B
- + QDC 239.5

Accessories



TA (A)



QDS 239 C



QDS 239 R



PTS



TU



LUF



TU Rack PB239



SHS




S 4 Ecoline

S 4 C.2

S 4 DC Mobileline

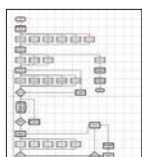
Technical data	S 4 Ecoline	S 4 C.2	S 4 DC Mobileline
Crimp force (kN / Ton)	1800/180	1800/180	1800/180
No grease: 20% less friction	✓	✓	✓
Control	Control A	Control C.2 + Touch	Control A
SAE R 12/4SP* 1 piece fitting	2"	2"	2"
SAE R 15/4SH* 2 piece fitting	1½"	1½"	1½"
SAE R 12/4SP* 2 piece fitting	2"	2"	2"
Industrial	2"	2"	2"
90° Elbows	1½"	1½"	1½"
Max. Crimp range	70 mm	70 mm	70 mm
Opening	+ 35 mm	+ 35 mm	+ 35 mm
Opening without dies	105 mm	105 mm	105 mm
Master dies length (mm)	100 mm	100 mm	100 mm
Type of dies	239 - xx	239 - xx	239 - xx
Speed (mm/sec)			
Close	2,7	2,7	0,8
Crimp	2,7	2,7	0,8
Open	4,7	4,7	1,3
Noise level	69 dBA	69 dBA	69 dBA
Drive	3 kW 3~VAC	3 kW 3~VAC	1,8 kW 1~VAC
Oil	35 L	35 L	4 L
L x W x H (mm)	592 x 545 x 672	720 x 600 x 672	509 x 430 x 485
Weight	160 kg	203 kg	132 kg
Options			
12 VDC/24 VDC	-	-	✓
1~ VAC	✓	✓	-

Type of dies	
 239-xx-Ø-yy	
Ø mm	-mm-
6,8	50
9	50
10	50
12	65
14	65
16	65
17	65
19	65
20	65
22	65
24	65
26	65
28	80
30	80
31	80
32	80
34	80
36	80
38	80
39	80
40	80
44	80
47	100
50	100
54	100
57	100
62	100

* According to the fitting.

Control C.2: Accessories

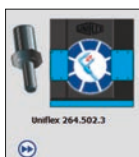
Additional Information



Customized software



Electronic caliper



Calibration mandrel



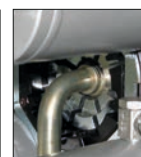
Barcode scanner



DMS



The 12 VDC/24 VDC The S 4 series can be used to crimp short 90° elbow fittings with a long e.g. for fitting service trucks.



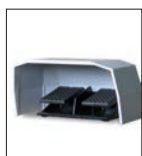
With the double pin connection, it is possible to crimp on the front and rear sides of S 4 series machines.



Multistep included with Control C.2



PFM included with Control C.2



PS Double foot pedal



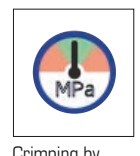
RFID



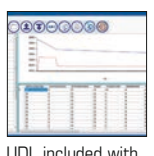
ULS



807.2



Crimping by Pressure included with Control C.2



UDL included with Control C.2