



Due to its narrow and innovative construction, high level of user friendliness and long service life, the S 8 i x l/10 i x l sets new standards for quality and cost effectiveness. Its large opening (+61 mm) fits industrial hoses with large flanges. The use of long master dies allows you to crimp 90° elbow fittings up to 2" with the tried and tested greaseless slide bearing technology, which reduces maintenance costs and increases the product quality.



S 8 i x l Ecoline C.2 + S 10 i x l Ecoline C.2



S 8 i x l + S 10 i x l

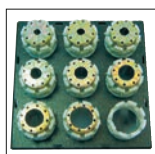


S 8 i x l C.2 + S 10 i x l C.2

<b>Large opening</b>
Openly built for easy crimping of even 90° elbow pieces, without having to remove all the dies
<b>Big crimping tool</b>
Crimping of 4"-industry hoses is possible
<b>Compact Design</b>
Fits in any workshop
<b>Slide bearing technology</b>
No greasing improves cleanliness of machine and prolongs its lifetime
Maximum productivity with very low maintenance costs
Flaking cannot stick in grease, no risk of prematurely damaging the crimping head
End product can be used in sanitary applications without cleaning
20% more capability for crimping stronger or more difficult couplings versus our competition's equivalent crimpers
Consistently accurate crimp result
<b>ECOLINE Version</b>
High quality for those new to crimping
<b>CE compliant</b>

We reserve the right to make technical changes without notice. Options are machine parts that can only be ordered while buying the machine.

## Package



GDS 239 B



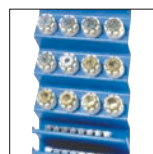
GDC 239.5

Package = Machine  
 + PB Ø 17, 20, 24, 28, 32, 40, 44, 50, 57, 71  
 + 237L.239.2  
 + GDS 239 B  
 + GDC 239.5

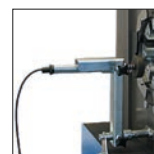
## Accessories



GDS 239 C



GDS 239 S



TA



TU Rack PB239



PS Double foot pedal  
(not Ecoline model).



SHS



PTS



LUF



Oil Cooler (OC S3/4/6/8/10)



S 8 i xl Ecoline | S 10 i xl Ecoline

S 8 i xl

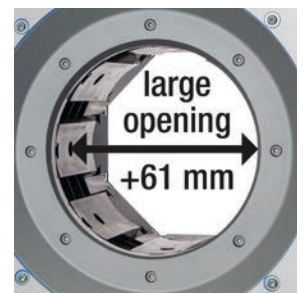
S 10 i xl

Technical data	S 8 i xl Ecoline	S 8 i xl	S 10 i xl Ecoline	S 10 i xl
Crimp force (kN / Ton)	2 200/220	2 200/220	2 800/280	2 800/280
No grease: 20% less friction	✓	✓	✓	✓
Control	Control A	Control A	Control A	Control A
SAE R 15*/4SH 1 piece fitting	2"	2"	2"	2"
4 SH* 2 piece fitting	2"	2"	2"	2"
SAE R 15* 2 piece fitting	1½"	1½"	2"	2"
Industrial	4"	4"	4"	4"
90° Elbows	2"	2"	2"	2"
Max. Crimp range	139 mm	139 mm	139 mm	139 mm
Opening	+ 61 mm	+ 61 mm	+ 61 mm	+ 61 mm
Opening without dies	200 mm	200 mm	200 mm	200 mm
Master dies length (mm)	126 mm	126 mm	126 mm	126 mm
Type of dies	239-xx-Ø/237 L**	239-xx-Ø/237 L**	239-xx-Ø/237 L**	239-xx-Ø/237 L**
Speed (mm/sec)				
Close	30/3,0	30/6,0	30/3,0	30/6,0
Crimp	1,4	1,4	1,4	1,4
Open	30/8,5	30/17	30/8,5	30/17
Noise level	70 dBA	70 dBA	70 dBA	70 dBA
Drive	4 kW 3~VAC	4 kW 3~VAC	4 kW 3~VAC	5,5 kW 3~VAC
Oil	50 L	70 L	50 L	70 L
L x W x H (mm)	700 x 600 x 850	890 x 600 x 1400	700 x 600 x 850	690 x 600 x 1400
Weight	350	430	350	430
<b>Options</b>				
Control C.2	✓	✓	✓	✓
1 Phase	✓	-	✓	-
12 VDC/24 VDC	✓	-	✓	-

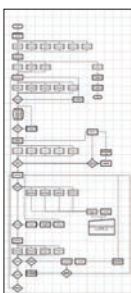
\* According to the fitting. \*\* Intermediate dies not required.

Type of dies	
	<b>239-xx-Ø-yy</b>
Ø mm	-mm-
6,8	50
9	50
10	50
12	65
14	65
16	65
17	65
19	65
20	65
22	65
24	65
26	65
28	80
30	80
31	80
32	80
34	80
36	80
38	80
39	80
40	80
44	80
47	100
50	100
54	100
57	100
62	100

Type of dies	
	<b>237 L</b>
Ø mm	-mm-
54	118
57	118
62	118
67	118
71	118
74	118
78	118
84	118
86	118
90	118
96	118
103	118
106	126
111	126
116	126
121	126
126	126
131	126



## Control C.2: Accessories



Customized software



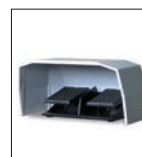
Electronic caliper



Calibration mandrel



Barcode scanner



PS Double foot pedal



RFID



ULS



807.2



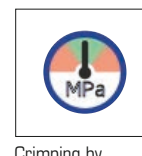
DMS



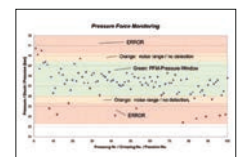
The S 8 /10 series is fitted with the clean slide bearing technology.



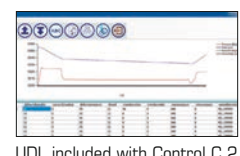
Multistep included with Control C.2



Crimping by Pressure included with Control C.2



PFM included with Control C.2



UDL included with Control C.2

## Additional Information